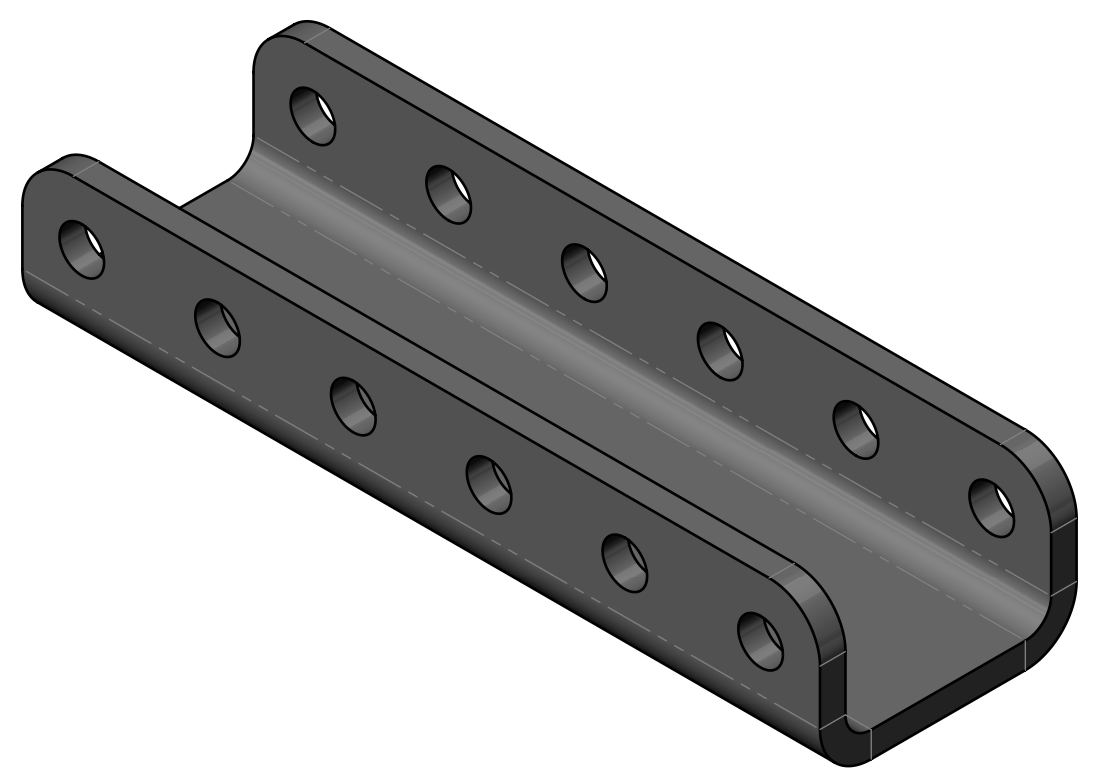
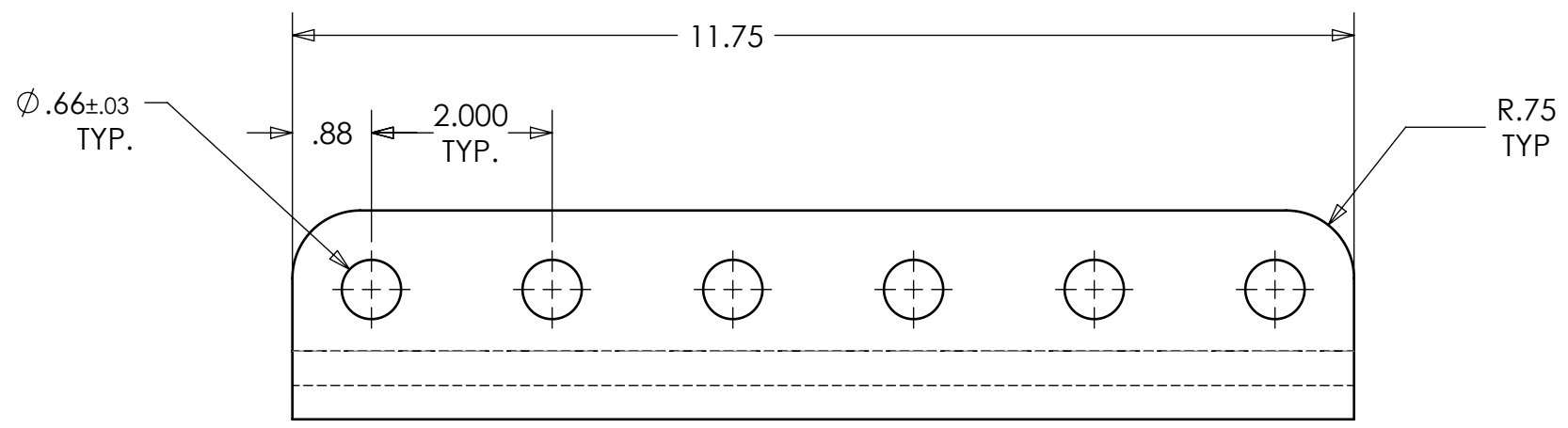
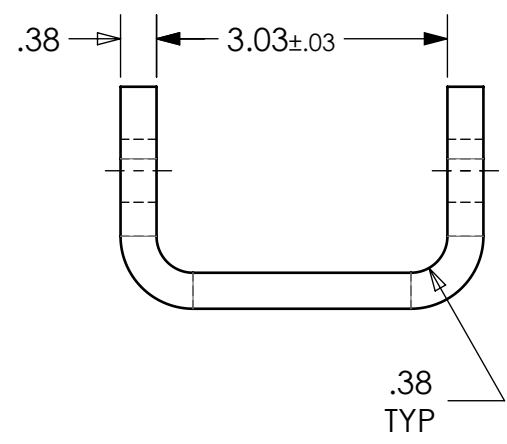



REVISIONS			
REV.	DATE	REVISION	APPROVED



UNLESS OTHERWISE SPECIFIED:
 DIMENSIONS ARE IN INCHES
 TOLERANCES:
 FRACTIONAL ± 1/32
 ANGULAR: MACH ± 1° BEND ±
 TWO PLACE DECIMAL ± .030
 THREE PLACE DECIMAL ± .015

INTERPRET GEOMETRIC TOLERANCING PER:
 MATERIAL
 MILD STEEL ASTM 44W
 FINISH

DO NOT SCALE DRAWING

ITEM NO.	PART OR IDENTIFYING NO.	NOMENCLATURE OR DESCRIPTION	MATERIAL SPECIFICATION	QTY REQD
PARTS LIST				
DRAWN		NAME	DATE	 POWER PIN INC. TITLE: 6 HOLE HITCH BRACKET
CHECKED		LW	Mar 6/15	
ENG APPR.				
MFG APPR.				
Q.A.				SIZE B DWG. NO. HM131 REV 0
PROPRIETARY AND CONFIDENTIAL THE INFORMATION CONTAINED IN THIS DRAWING IS THE SOLE PROPERTY OF POWER PIN INC. ANY REPRODUCTION IN PART OR AS A WHOLE WITHOUT THE WRITTEN PERMISSION OF POWER PIN INC. IS PROHIBITED.		SCALE: 1:2		WEIGHT: 5.25 LB. SHEET 1 OF 1